

Ultimate Multi-Function Performance

KIP 7170

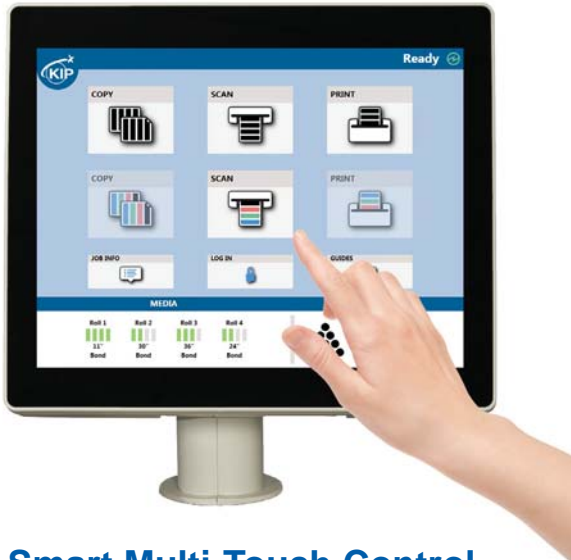
The cloud connected productivity of the KIP 7170 system is designed to satisfy the most demanding needs of decentralized users. The versatile KIP 7170 may also be expanded to provide multi-function convenience. KIP 7170 system software is ideal for decentralized environments and expandable to meet the need for centralized printing.

Perfect View - adjustable touchscreen for the ideal viewing angle to select features, control job queues, review system status, print image files or scans – and get a large, full color look at image files before you print, make changes and see your results immediately.



KIP 7170

Infinite Possibilities



Smart Multi-Touch Control

- 12" Smart Multi-Touch Display
- Touch Simplicity: Swipe, Rotate, Pinch, Spread & Tap
- Intuitive, Tablet Style Touch Controls
- Uniform Operations for Improved Experience
- Walk-Up Operator Convenience
- High Demand Productivity
- View and Print Area of Interest

KIP 7170

MULTI-FUNCTION SPACE SAVING SYSTEM

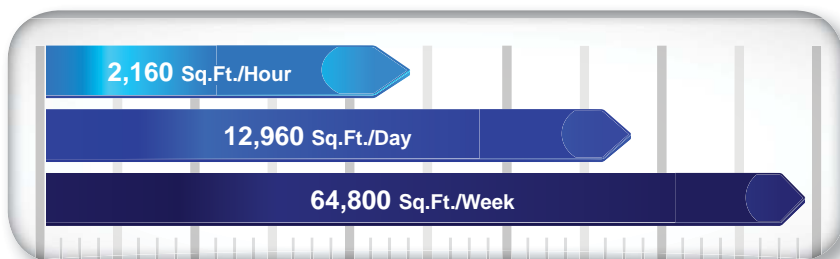
The productivity of the KIP 7170 system is designed to satisfy the most demanding needs of decentralized users. The versatile KIP 7170 may also be expanded to provide Multi-Function convenience. KIP 7170 system software is ideal for decentralized environments and expandable to meet the need for centralized printing.



System Features

- Single footprint configuration
- Color touch controls
- Integrated top stacking
- 2 integrated media rolls
- 6 'D' / 'A1' size prints per minute
- 600 X 2400 dpi printing
- High definition print technology
- Print from & scan to the cloud
- CIS scanning technology - with Real-Time Thresholding Technology
- Rear delivery for high production
- Smart eco² design

KIP 7170 Print Production



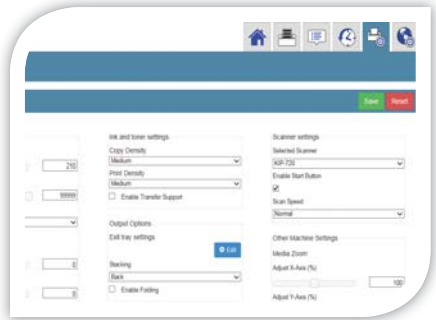
Integrated USB Drives

KIP 7170 systems eliminate the need for additional PC hardware by printing documents directly from the touchscreen software. Integrated support for removable media such as standard USB drives provides the ability to securely print documents directly from a range of media formats.

KIP 7170

PRODUCTION SYSTEM WITH STACKING

KIP's stackers include advanced intelligent online systems that suit your exact needs, while maintaining the flexibility to grow as demands increase. Operators have the flexibility to direct prints and copies to a preferred destination – the front delivery stacking system or a rear system for increased production.



Multi-Tasking

- Direct prints to stack on top or rear
- Create color copies directly to inkjet printers
- Scan to a wide range of file formats
- Real-time copy and scan previews
- USB printing and scanning support
- On-screen copy, print & scan previews



KIP 7170

PRODUCTION SYSTEM WITH FOLDING

The KIPFold 1000 and KIPFold 2000 finishing systems automate wide-format document finishing by providing folding, stacking and collation in a compact design.



Superior Productivity

- Precision document folding
- Operates at full print engine speed
- Ultra-quiet operation
- Online and offline folding
- Fully integrated with KIP software
- Compact footprint



KIP 7170 System Configurations



KIP 7170 production system with integrated front delivery print tray & optional KIP 1200 high capacity stacker



KIP 7170 production system with optional KIPFold 1000 online fan folder



KIP 7170 multi-function system with integrated front delivery print tray

System Configurations	
2 Roll Print/Copy/STF with Color STF	B&W wide format printer with integrated scan system
Stacking Systems (standard)	Integrated top stacking - up to 50 sheet capacity
Stacking Systems (optional)	Rear print tray, print & original stacking system, KIP 1200 stacker
Folding Systems (optional)	KIPFold 1000, KIPFold 2000
General	
Print Technology	Electrophotography (LED) with organic photoconductor (OPC) and closed toner system
Speed	6 D / 3.3 A0 size pages per minute, FPOT (First Print Output Time) 21 seconds D / A1 size page
Warm Up Time	Instant from standby, <4.5 minutes from start up
Configurations	Multifunction system (print/copy/scan) 2 rolls
Electrical Requirements	120 V +6% or -10%, 50/60 Hz, 15 Amps / 220 - 240 V, 50/60 Hz, 7 A
Power Consumption	Sleep: <14 W Printing: 1.5 kW
Dimensions	63" (w) x 28" (d) x 59" (h) / 1590 mm (w) x 700 mm (d) x 1510 mm (h)
Weight	538 lb. / 244 kg
Printer	
Print Resolution	600 x 2400 dpi
Paper Capacity	3000 sq. ft. / 297 sq. m roll media
Output Sizes Width	11" - 36" / 297 - 914 mm
Output Sizes Length	Length: 20' / 6 m (standard), 500' / 152 m (optional)
Paper Weight	Bond-Plain 18-24 lb. / 64-90 gsm, vellum-translucent-tracing 18-20 lb. / 80 gsm, film 3.5-4 mil / 75 micron
Media Type	Bond-plain, vellum-translucent-tracing, film (compatible with recycled & colored bond)
Controller	
Controller Type	KIP System K Controller with Windows 7 Embedded
Memory	2 GB DDR3 standard - upgradable to 4 GB
Compatible File Formats	PDF, DWF, HPGL 1/2, HP-RTL, Calcomp 906/907, CALS Group 4, TIFF Group 4, PCX, CIT/TG4, Uncompressed, Grayscale TIFF, TIFF Packbits, PNG, JPEG
KIP 7170 Scanner	
Scanner Type	Fully Integrated - C.I.S. with KIP RTT Technology
Scan Resolution	600 x 600 dpi optical resolution
Scan Speed	Up to 38.5 ft. per minute / 195 mm per second (B&W) Up to 13 ft. per minute / 66 mm per second (Color)
Scan Format	TIFF, Multipage TIFF, PDF, PDF-A, Multipage PDF, DWF, Multipage DWF, JPEG, CALS
Scan Destination	Local USB (removable media), unlimited system mailboxes (local), unlimited FTP, unlimited SMB, unlimited cloud connect to OneDrive, Google Drive or Dropbox, Box.com, Microsoft SharePoint & Microsoft Office 365 Online™
Original Size Width	11" - 36" / 297 mm - 914 mm
Original Thickness	Up to 1.6 mm thick

SYSTEM SOFTWARE **K**

KIP System K Software Suite provides an enhanced user experience and exceptional productivity for the seamless control of color and black & white print demands. Features include:

- Touchscreen tablet navigation.
- Standardized system icons with tile interface.
- Print submission applications with systems management, configuration and systems status.
- Software applications feature ribbon command bar with extended choice of functions.
- SNMP protocols, cost center control and cloud collaboration.
- System K Windows® Driver, WHQL certified, touch PC compliant with simplified / advanced functions and systems status.

KIP System K Software Suite uniformly integrated with KIP 70 Series, KIP 940 and the new KIP color systems to introduced in Q3 2015.



SYSTEM SOFTWARE **K**

A new generation of wide format functionality

We invite you to experience the intuitive interface, extensive functionality, advanced navigation and cloud collaboration for your production environment. KIP System K Applications are uniformly integrated with KIP Multi-function Systems for smarter color and B&W copy, scan and print solutions.

SYSTEM K

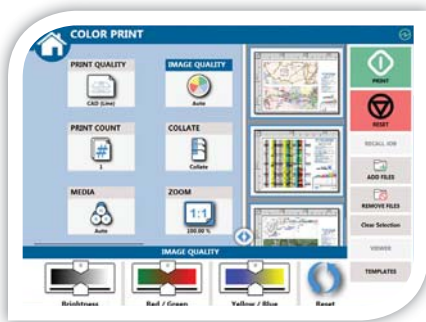
MULTI-TOUCH SCREEN

KIP Multi-Touch Control

All system functions for the KIP 70 Series are performed through an integrated, 12" multi-touch style color display to copy, print and scan both color and B&W documents.



Vivid 12" Color Multi-Touch Display | Fully Articulating Viewing Angle | Print, Copy and Scan in B&W and Full Color* | Super View for Swipe, Pinch, Spread and Rotate | Print Directly from Removable Media, the Cloud and Local Mailboxes | Full Color User Guides | Integrated Print Previews | View and Print Area of Interest | On-screen Set Copy Editor | Manage History Queue | Optional KIP Color Plus for Copy and Print in Full Color*



KIP Color Copy & Print Plus

KIP Color Copy & Print Plus expands the capabilities of the KIP 70 Series System by connecting to up to three networked color printers.



Full Size Color Preview with Super View | Guest Printer Connection via IP Address | Quick Closed Loop Calibration for Accurate Document Reproduction | Simultaneous Operation of Color and B&W Functions | Real Time Image Preview | Full Screen Color Preview | Advanced Color Image Enhancement | Preview Color Adjustments

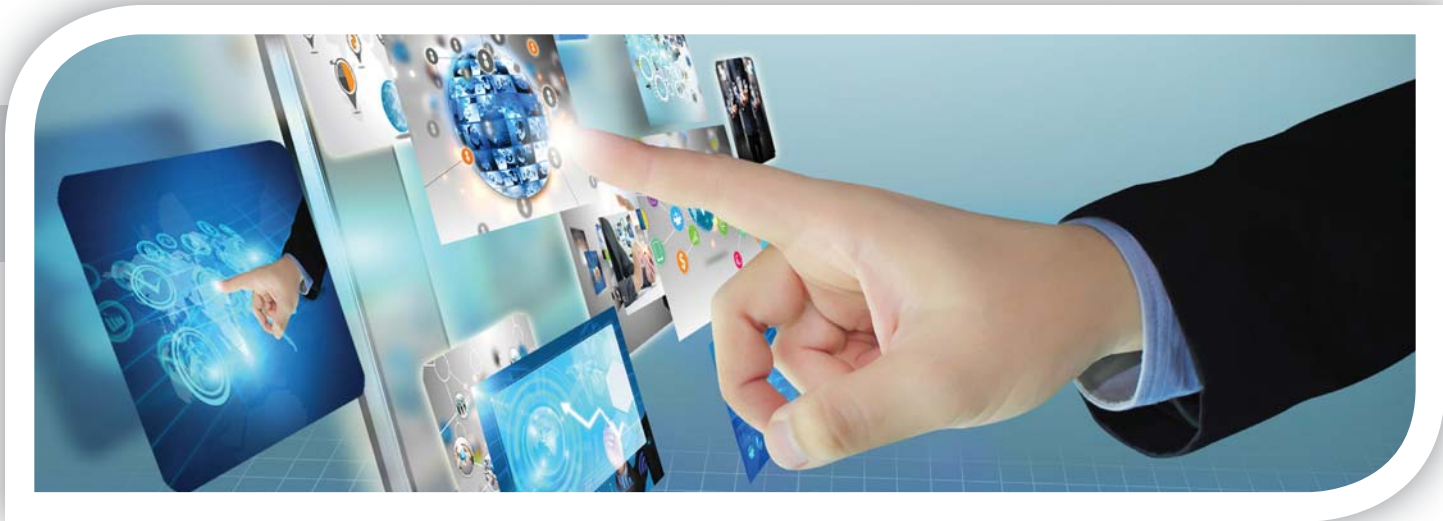
KIP Cloud Connect

Sharing online content via popular Cloud Services has become a critical collaboration tool. Scan to and print from the cloud directly at the multi-touch display.



Select from Multiple Cloud Services | Print from KIP Cloud Connect | Scan to KIP Cloud Connect | Unlimited Cloud Connections | Single or Multiple Files | Choose Files from Multiple Cloud Services for Single Print Job | Easy Configuration from Multi-Touch Screen | Collated Sets Printing





SYSTEM K

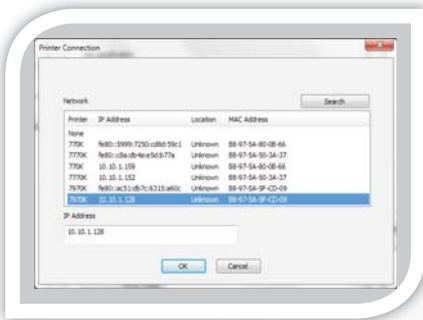
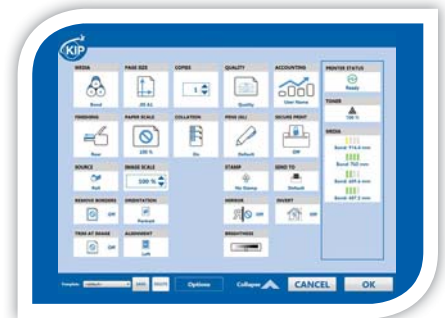
PRINT DRIVERS

Windows® Driver

The KIP Windows® Driver Pro is Microsoft® WHQL certified, meeting exact standards of reliability and quality.



Fast Spooling for Multiple Copies or Sets | Displays Real Time System Status | Information Set Collation | Provides Current Media Information | Media Selection | Secure PIN Printing | Send Job on Hold | Save Templates | Brightness Adjustment | Unlimited Image Quality Presets | Pen Preset Selection



AutoCAD® Driver

The KIP certified AutoCAD® Driver provides integrated printing from within Autodesk® software applications such as AutoCAD®, AutoCAD® LT and DWG TrueView.



Fully Compatible with Current Versions of AutoCAD® | True HDI AutoCAD® Driver | 32 and 64 Bit Operating System Compatibility | Real Time Media Status | Custom Media Size Configuration | Media Saving by Auto Rotation | Advanced Color Mode Image Type Selection | Dither Pattern Control for B&W Lines vs Aerial

KIP Data Security Features

At KIP, security is paramount. As a world leader in the development of digital wide format production technology, KIP is committed to keeping digital information safe and secure.



Image Overwrite | Removable Hard Disk Drive Accessory Kit | System K Operating System Windows® Embedded System 7 | Standard Security Updates | Data Encryption and Virus Scanning Applications | KIP Secure Print



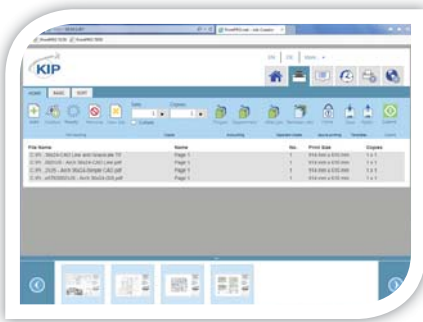
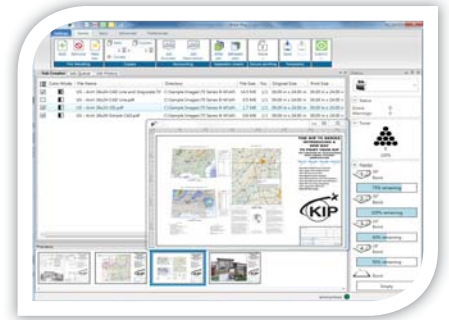
KIP Print Management Applications provide intuitive productivity for professional results across the full range of KIP Color and B&W Systems.

KIP PrintPro

Designed for Windows® PC's, KIP PrintPro is an intuitive system management and print submission application for the complete range of KIP Color and B&W Systems.



Multiple Copies or Collated Sets | WYSIWYP Image Preview | Individual File Settings for Job Matrix Templates | Multi-Page Settings | Color Adjustments and Filter Selections | Email Notification | Customize Job Build Matrix Windows | Document Folding and Stamping | HPGL Pen Preset Selection | Windows® 7/8 and Vista Compatible (32 and 64 Bit) | Customize System and Folder Presets | Manage Print Queue | KIP Secure Print



KIP PrintPro.net

KIP PrintPro.net provides KIP Color and B&W Systems with the most feature rich browser based print submission and system management application on the market.



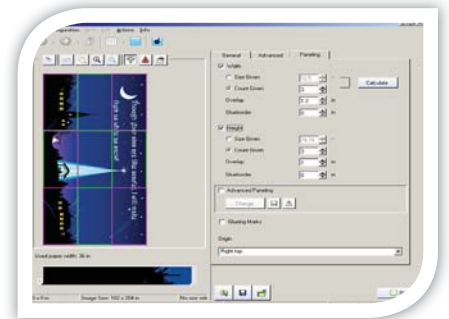
Multiple Copies or Collated Sets | WYSIWYP Image Preview | Individual File Settings for Job Matrix Templates | Multi-Page Support | Color Adjustments and Filter Selections | Email Notification | Document Folding and Stamping | HPGL Pen Preset Selection | Transfer Files from KIP Printer Mailbox | Customize System and Folder Presets | Manage Print Queue and User Settings | KIP Secure Print

KIP GraphicPro

KIP GraphicPro is a full featured RIP for graphic and technical production printing on KIP Color Systems that fully supports graphic and technical production printing.



Unlimited Workstation Licenses | B&W, Grayscale and Color Printing | Job Editor for Mixed B&W and Color Sets | Multi-Page PDF/TIF | Filter Editor for Color Control | ICC Profile Support for CMYK and RGB Color Management | Factory/Custom Media Profiles | Nesting Single and Multiple Images | Automatic Horizontal and Vertical Paneling | Area of Interest (Zoom to Area and Print) | B&W and Color Editing Tools | Job Monitor



KIP Smart Print & Scan

KIP Smart Print & Smart Scan are flexible approaches to delivering print and scan services – one that responds to mobile business needs by providing a driverless cloud solution.



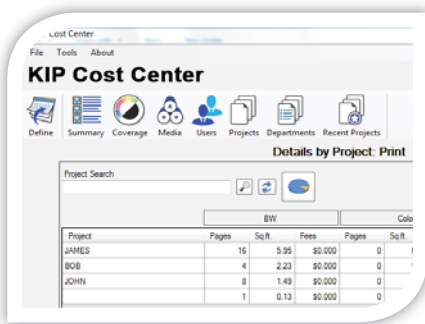
Submit Print Ready Files via Email Attachments | Works with any Web Enabled KIP Printer | Print B&W or Color Documents | Scan Full Size Documents | Choose an Area of Interest | Remote Scan Auto-Archived or Printed by KIP Printer | Optional Keywords Provide Expanded Flexibility

KIP Accounting Center

The KIP Accounting Center consolidates control of user account data and printing rules for all copy, print and scan activities for KIP Color and B&W Systems. All System K Print Submission Apps are integrated with KIP Accounting Center.



Username and Two Customizable Fields | Import User Data Using LDAP | Clear Fields After Each Job Submission | ASCII Import/Export | Easily Update User, Project and Department Data | Automated KIP System Update via Scripting | Password Protect any or all Data Entries | No Special Data Servers Required



KIP Cost Center

The KIP Cost Center application retrieves extensive log files directly from KIP Systems and automatically generates production reports for user, project and department level accounting data.



Integrated with all KIP Apps and Touchscreen Systems | Track Color and B&W Copy, Scan and Print | Easy to Understand Graphical Reports | Average Toner Coverage by Percent | Daily Print and Scan Volume for Color and B&W | User, Project and Department Categories | Access the Details of the Last 100 Jobs | KIP Toner Costs by Color and B&W | KIP Maintenance Costs | KIP Scanner Costs by Color and B&W

KIP Card Reader Systems

KIP offers customers two solutions to secure the KIP Systems using contactless card readers.



Contactless Card System Integration: Standard FeliCa Cards | Various Contactless Cards | User Authentication Linked to Card | Load User and System Presets | Load User Cloud and SMB Credentials | Track Usage by Card | Release User Jobs at Touchscreen | KIP Accounting Center Integration | KIP Cost Center Integration

Common Access Card Solution: Enables/Disables Network Access | Designed for Easy Installation | Meets Homeland Presidential Security Directive (HSPD-12) | Local and Network User Authentication Using LDAP or Active Directory | Netgard MFD In-Line Network Appliance



KIP Printer Status / SNMP

The KIP Printer Status application is the ideal solution for providing centralized status updates and information to administrators and users over a local or Wide Area Network.



SNMP Communication to KIP Printer | PC Based Windows® 7/8 Application | Monitor Status of KIP Printers | Auto Detect KIP Printer (LAN) | Visual Notification for Machine Status | View all KIP Printers on a Single Screen | Automated Meter Read

SYSTEM SOFTWARE **K**

Print Management Solutions

KIP Touchscreen Technical Interface

The KIP Touchscreen Technical interface is a comprehensive program for the control of KIP Systems, Installation & Technical Support.

The touch intuitive and versatile interface includes mode tiling which simplifies the technical experience and management of the KIP System.

- Integrated with KIP Color plus Black & White Systems
- Manage and Modify Printer Functions and Settings
- Review Printer Status and Operational History

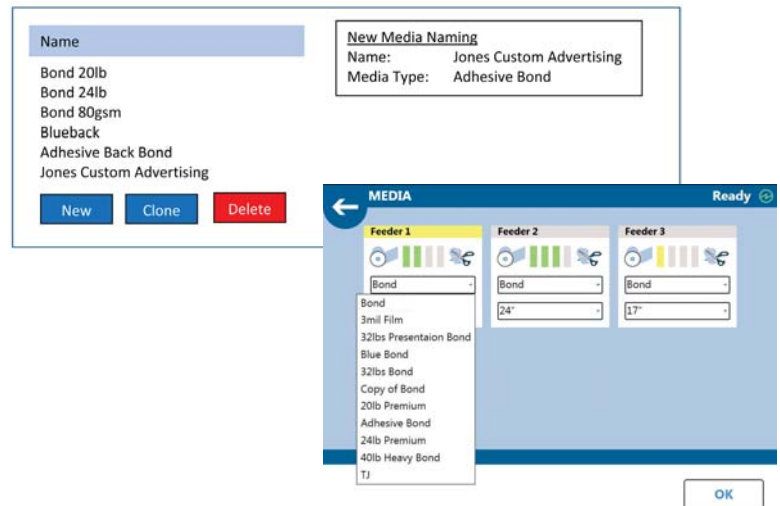


Print Management Solutions

KIP Custom Media Manager

The KIP Custom Media Manager is a graphic user interface that allows the operator to identify and customize names to a wide range of media types and the KIP Systems specifications.

- Integrated with KIP Color plus Black & White Systems
- Automatically Adjust Systems Parameters
- Descriptive Media Categories





Wide Format Finishing Solutions



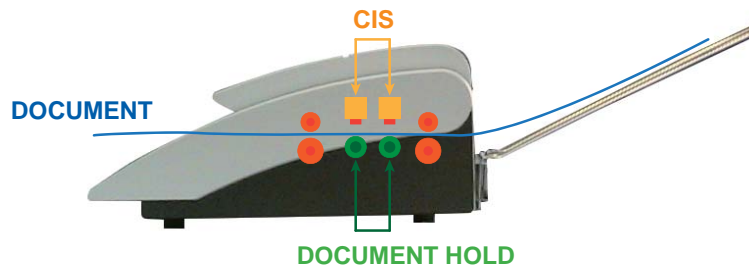
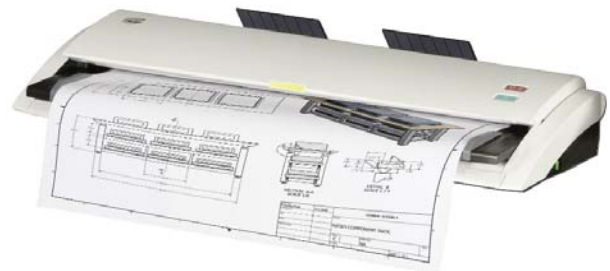
CIS Technology Scan System

KIP 720

The KIP 720 large format scanner is a 24-bit, full-color image capture system perfect for processing photographs, complex maps, and AEC / CAD drawings. The CIS (Contact Image Sensor) scanning technology enables high-resolution, high-speed image capture with energy saving operation from a compact design.

System Features

- Create color copies directly to inkjet printers
- Scan to a wide range of file formats
- Real-time copy and scan previews
- USB printing and scanning support
- On-screen copy, print & scan previews



The KIP 720 scanner features a support system to enhance feed reliability

General	
Scanner Type	C.I.S. with KIP RTT Technology
Scan Resolution	600 x 600 dpi optical resolution
Scan Speed	Up to 8 ips / 203 mm per second (B&W) Up to 2.6 ips / 66 mm per second (Color)
Scan Format	TIFF, Multipage TIFF, PDF, PDF-A, Multipage PDF, DWF, Multipage DWF, JPEG, CALS
Scan Destination	Local USB (removable media), unlimited IPS mailboxes (local), unlimited FTP, unlimited SMB
Original Size Width	11" - 36" / 279 mm - 914 mm
Original Thickness	Up to 1.6mm thick
Original Handling	Integrated document returns (standard). Output rack for up to 10 originals (optional)
Interface	USB 2.0
Dimensions	43" (w) x 16" (d) x 6.7" (h) / 1,092 mm (w) x 406 mm (d) x 170 mm (h)
Weight	53 lb. / 25 kg
Electrical	100-240 V AC 50/60 Hz
Power Consumption	<50 W

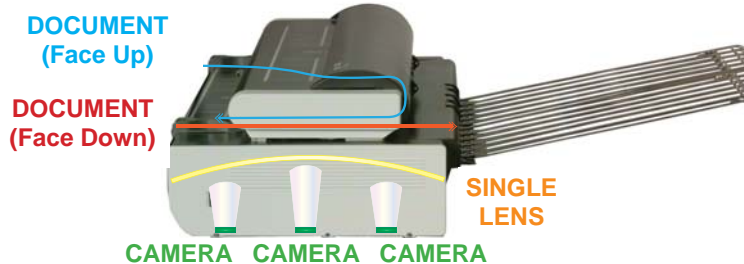
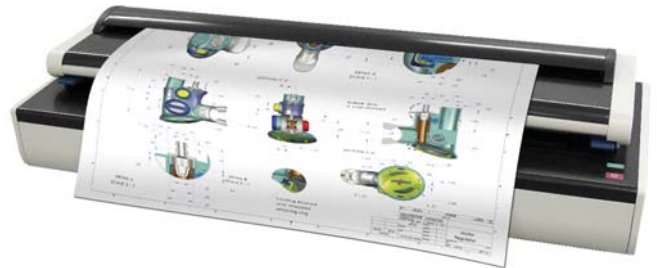
High Production Scan System

KIP 2300

The KIP 2300 high productivity camera scanner sets a uniquely high standard for speed; quality and flexibility in a digital image capture system. Best in class productivity is achieved via new KIP Tru•Speed Technology for high speed data processing with no delays.

System Features

- Ultra fast imaging with KIP Tru•Speed Technology
- Visual operator feedback system
- Productive stream-scanning
- Extended optical system warranty
- High resolution, 24-bit color image quality
- Rigid/thick stock support with auto tension adjust



Three independent imaging cameras with an advanced laser alignment system and self calibrating diagnostics provide an extraordinary level of quality.

General	
Scanner Type	C.C.D. with KIP Tru•Speed Technology and KIP RTT Technology
Scan Resolution	600 x 600 dpi optical resolution
Scan Speed	Up to 12 ips / 305 mm per second (B&W) Up to 6 ips / 152 mm per second (Color)
Scan Formats	TIFF, Multipage TIFF, PDF, PDF-A, Multipage PDF, DWF, Multipage DWF, JPEG, CALS
Scan Destination	Local USB (removable media), unlimited IPS mailboxes (local), unlimited FTP, unlimited SMB
Original Size Width/Length	Originals up to 42" - 36" / 1,066 mm - 914 mm scan width
Original Thickness	Up to 0.6" / 16 mm automatic thickness detection
Original Face Up/Face Down	Both - dual original feed tables
Interface	USB 2.0, KIP Tru•Speed Technology (2.3 GB per second data transfer)
Dimensions	55" (w) x 21" (d) x 11" (h) / 1,399 mm (w), 480 mm (d), 310 mm (h)
Weight	160 lb. / 73 kg
Electrical	100-240 V AC 50/60 Hz
Power Consumption	<120 W

Online Fan Folder

KIPFold 1000

The KIPFold 1000 is a compact but powerful online folder designed to easily, conveniently and quickly fan fold documents with KIP 70 Series systems. Folded documents packets are crisp and professional, ready for distribution. This online paper folder is environmentally friendly, making it ideal for decentralized production environments.

Documents up to 36" / 914 mm wide by any length are easily handled for fast fan folding. In addition, fan-folded documents may be manually fed through the KIPFold 1000 to create finished fold packets in accordance with DIN, ANSI or ARCH* standard sizes. Folded documents packets are crisp and professional, ready for distribution.



Standard Features	
One-step fold selection from KIP Software Suite, KIP Windows & AutoCAD drivers	Unfolded prints stack on front stacking print tray
Folding at rated full system speed - all compatible KIP models	Feed height - 25.6" - 33.5" / 650 mm - 850 mm
Direct interface to KIP system	Stacks up to 20 fan folded documents
Fold packet parameters - International standards	Ultra quiet operation
Specifications	
Compatible KIP Systems	KIP 7170/7770/7970 (Front stacking print tray required)
Technology	Fold roller
Paper Feed	Automatic/Manual
Fold Speed	8 ft./minute - 59 ft./minute / 42 mm/second - 300 mm/second
Media Width	11" - 36" / 297 mm - 914 mm
Media Length	8.3" - 20' / 210 mm - 50 m
Media Weight	16 - 28 lb. bond / 60 - 110 gr/m ²
Media Type	Bond - Plain
Fold Types	DIN, ANSI or ARCH sizes
Fold Sizes	4" - 16" / 100 mm - 420 mm (adjustable)
Fan Fold Stacking	Up to 20 fan folded documents
Margins (filing edge)	0" - 2" adjustable in 0.25" increments / 0 mm - 50 mm

Note: The maximum toner coverage for folded documents should be less than 25%. Above this coverage, packet tolerances may not be maintained and additional mis-feeds may occur.

Online Fan & Cross Folder

KIPFold 2000

The KIPFold 2000 system automates wide-format document folding requirements by providing folding, stacking and collation in a compact design. KIP online folders intelligently communicate with KIP printers and are fully integrated with KIP software applications & printer drivers to provide seamless workflow integration.

KIP system print production is folded and stacked at maximum speed, allowing for easy document filing and distribution. A reliable and durable fold roller system ensures maximum packet accuracy.



Standard Features	
One-step fold selection from KIP Software Suite, KIP Windows & AutoCAD drivers	Flat stacking - up to 100 prints
Folding at rated full system speed - all compatible KIP models	Offline folding - adjustable feed rail for precision
Direct interface to KIP System	Stacks up to 100+ packet and book folded documents
Fold packet parameters - all International standard sizes	Ultra quiet operation
Specifications	
Compatible KIP Systems	KIP 7170, KIP 7770, KIP 7970, KIP 9900, KIP 940
Technology	(Rollers/Blades) Media transportation via roller with precise blade action for creating tightly folded packets
Fold Speed	80 mm - 240 mm / second
Media Width	11" - 36" / 297 mm - 914 mm
Media Weight	16 - 24 lb. / 60 - 100 gms
Media Type	Bond - Plain
Fold Types	DIN, ISO, AFNOR, ARCH, ANSI, JAPAN STD + Customizable sizes
Packet Sizes	7" - 12" adjustable in 0.1" increments / 180 mm - 305 mm adjustable in 1 mm increments B ANSI - Packet & Book 8.5 x 11 / 9 x 12, Staple 8.5 x 11, Mailer 7.5 x 10 B ARCH - Packet, Book & Staple 8.5 x 11 / 9 x 12, Mailer 7.5 x 10 C ANSI - Packet & Book 8.5 x 11 / 9 x 12, Staple 8.5 x 11, Mailer 7.5 x 10 C ARCH - Packet, Book & Staple 8.5 x 11 / 9 x 12, Mailer 7.5 x 10 D ANSI - Packet & Book 8.5 x 11 / 9 x 12, Staple 8.5 x 11, Mailer 7.5 x 10 D ARCH - Packet, Book & Staple 8.5 x 11 / 9 x 12, Mailer 7.5 x 10 E ANSI - Packet & Book 8.5 x 11 / 9 x 12, Staple 8.5 x 11, Mailer 7.5 x 10 E ARCH - Packet, Book & Staple 8.5 x 11 / 9 x 12, Mailer 7.5 x 10 A3, A2, A1, A0 - 190 mm x 297 mm (20 mm margin), 190 mm x 297 mm, 198 mm x 297 mm (TAB), 210 mm x 297 mm
Folded Packet Stacking	Up to 100
Fan Fold Stacking	Up to 20 - dependent on # of panels
Flat Print Stacking	Up to 100 standard size sheets on bridge
Maximum Document Length	19.6' / 6 meters (see options)
Margins	0" - 2" adjustable in 0.1" increments / 0 mm - 50 mm adjustable in 1 mm increments
Web Interface	Web browser enabled diagnostics
Title Block	DIN or inverse

Note: The maximum toner coverage for folded documents should be less than 25%. Above this coverage, packet tolerances may not be maintained and additional mis-feeds may occur.

Wide Format Stacking Systems

Print Stacking Systems

KIP offers a range of finishing solutions designed to deliver print output just the way you want it. Consistent, accurate and reliable finishing products deliver maximum document control with minimum effort.

KIP's wide range of stackers includes advanced intelligent online systems that to suit your exact needs, while maintaining the flexibility to grow as demands increase.

KIP Finishing Solutions

- Solutions for all KIP systems
- Bi-directional communication with KIP systems
- Ultra quiet operation
- Stacking systems for all print volumes
- Stack mixed-size sheets
- Compact footprint
- Provides system flexibility



KIP Stacking System Configurations



KIP Original & Print Stacking System
KIP 7170



KIP Print Rack
KIP 7770, KIP 7970



KIP 1200 Auto Stacker
KIP 7170 / 7770 / KIP 7970

KIP 7170 Print & Original Stacking System	
Compatible with	KIP 7170
Weight	27 lbs./13 kg
Dimensions	42"/107 cm (w) x 48"/122 cm (w) x 47"/120 cm (h)
Minimum Distance from Wall (with flat output down)	
Left	12"/31 cm
Right	12"/31 cm
Front	12"/31 cm
Total Space	See printer spec
Print Rack	Adjustable to fit up to 100 mixed size prints

KIP Print Rack	
Compatible with	KIP 7770, KIP 7970
Weight	36 lbs./17 kg
Dimensions	35"/ 89 cm (w) x 47"/ 120 cm (d) x 32"/ 82 cm (h)
Minimum Distance from Wall (with flat output down)	
Left	12"/31 cm
Right	12"/31 cm
Front	12"/31 cm
Total Space	See printer spec
Print Rack	Adjustable to fit up to 50 A – E mixed prints

KIP 1200 Specifications	
Compatible with	KIP 7170, 7770, KIP 7970
Weight	176 lbs./80 kg
Dimensions	41"/104 cm (w) x 34"/86 cm (d) x 29-34"/74-86 cm (h)
Minimum Distance from Wall	
Rear	10 - 34"/25 - 86 cm
Left	6"/15 cm
Right	6"/15 cm
Front	See printer spec
Total Space	53"/135 cm x 44"/112 cm or 68"/173 cm with rack up
Electrical (Dedicated)	120 V, 5 Amps
Print Rack	Capacity: Up to 1000 sheets (20 lb./75 gsm plain bond paper)



www.KIP.com

Email: info@kip.com

U.S.A. Phone: (800) 252-6793

Canada Phone: (800) 653-7552



KIP is a registered trademark of the KIP Group. All other product names mentioned herein are trademarks of their respective companies. All product features and specifications are subject to change without notice. Complete product specifications are available upon request. © 2015

V05/08/15